



PASSWORD RBL

PASSWORD FIREWALL

FOR WINDOWS

ADMIN GUIDE

VERSION 3.00



Table of Contents

Introduction	4
What is Password Firewall?	4
Why use Password Firewall?	4
Flexible Subscription	4
Source Available	4
Focus on Security	4
Lightweight	5
High Quality Data	5
System Requirements	5
Components	5
Upgrade Information	6
Installation	6
Before Installing	7
Interactive Installation	7
Automated Installation	8
Basic Syntax	8
Parameter Listing	8
Examples	10
Using Group Policy	10
Manual Installation	12
Additional Configuration Options	13
AllowOnError	13
ReportingOnlyMode	14
Using a GroupFilter	14
Using Tracking IDs	14
Using Custom Blacklists	14
Un-installation	16
Before Uninstalling	16
Easy Uninstall	16
Interactive Uninstall	16
Automated Uninstallation	17



Using Group Policy	17
Manual Uninstallation	18
Troubleshooting	19
Installation	19
Operation	20
Error Messages.....	20
Slow Password Changes	21
No Log Entries in Event Viewer.....	21
Frequently Asked Questions	21
Additional FAQs.....	23
Password Firewall Version History	24



Introduction

Thank you for your interest in Password Firewall for Windows. Password Firewall works in tandem with Password RBL's Real-time password blacklisting service to prevent the use of bad passwords in Active Directory that often lead to unauthorized access of business resources by hackers.

What is Password Firewall?

Password Firewall is an implementation of Password RBL's SaaS-based password security solution for Microsoft's Active Directory. This allows organizations to easily enforce the use of strong passwords that are not on the growing list of passwords used by hackers to gain unauthorized access to network accounts. Password Firewall provides significantly increased password security to the masses of Windows-based networks in a secure, easy and affordable manner.

Why use Password Firewall?

Reports of network breaches are increasing in frequency, but one aspect remains constant; weak password security is among the most common tactics used to gain unauthorized access to interior business networks as well as proprietary and customer identity data. A common method to combat these attacks is to enforce a password policy, but the built-in password policy functionality in Windows Server does not include a blacklist feature. This is where Password Firewall fits in. Password Firewall, backed with an active subscription to the Password RBL real-time blacklist database of bad passwords, is an extremely easy and cost effective way to prevent the usage of poor passwords that are likely to be exploited by hackers. This is but one of the many reasons to add Password Firewall to your network security framework. Other reasons include:

Flexible Subscription – Using Password Firewall is not a license to use one application, but rather a monthly subscription to Password RBL, which allows organizations to utilize the Password RBL API from Active Directory to protect their Windows-based network, but also from various other systems, such as internal Intranet sites, public-facing websites, custom mobile apps, etc., all for the same monthly fee.

Source Available – All code provided by Password RBL, including the code used by Password Firewall for Windows, is either provided in a readable language or the source code is available for download and analysis by your company's security team.

Focus on Security – All aspects of the Password RBL service were designed with Security as a priority, not as an afterthought.



Lightweight – Password Firewall for Windows is completely transparent to end-users and only requires a small installation on Active Directory Domain Controllers. There's nothing new for admins to learn and end-users don't need to do anything different when changing passwords.

High Quality Data – Password RBL builds its password database with discovered password lists, analyzes hacker tools and uses honeypot servers to capture passwords actively being used by hackers. And all these passwords sources are reviewed by a real human before incorporating into the Password RBL database.

System Requirements

Password Firewall was designed to use built-in Windows APIs and function calls and therefore has minimal overall requirements. Password Firewall does require 64-bit versions of Windows Server and is designed to be installed on Active Directory Domain Controllers. The components that make up Password Firewall are supported on Windows Server 2008 R2, Windows Server 2012, Windows Server 2012 R2, and Windows Server 2016. The processing and memory requirements of Password Firewall are negligible since there is no “always on” service running. Instead, the Password Firewall code is called on demand by Windows when a password change event occurs. Additionally, all logging is performed via standard Windows Event Log entries, so disk utilization is barely noticeable.

Requirements Summary

- Operating System: Windows Server 2008 R2, 2012, 2012 R2, 2016
- Processor: Any x64 processor supported by Microsoft Windows Server
- Memory: Negligible
- Disk: 5 MB
- Network: HTTPS connectivity to Password RBL API using the standard TCP port 443.

Components

The Password Firewall product is composed of three major components, 1) a DLL [passwdhk.dll] that “hooks” into the built-in Password Filter API of Microsoft Windows, 2) a PowerShell script [passwdfw.ps1] that provides most functionality as well as connectivity to the Password RBL API, and 3) an INI file [passwdfw.ini] where configuration options are stored.



The `passwdhk.dll` extends the built-in support of Microsoft Windows to call a custom Password Filter. The provided `passwdhk.dll` is registered with the Local Security Authority (LSA) in Windows. When a password change event occurs, Windows calls the registered DLLs listed in the LSA Notification Packages key of the registry. The provided `passwdhk.dll` accepts the username and password from the Windows Password Filter handoff and passes this information to the Password Firewall PowerShell script.

The second component of Password Firewall is a Windows PowerShell script [`passwdfw.ps1`] compatible with built-in Windows PowerShell v1 scripting. The script accepts the username and password captured by Windows (and provided to `passwdhk.dll`). The script then salts and iteratively hashes the provided password with the industry standard PBKDF2 algorithm 30,000 times before forming and sending the query to the Password RBL API. (The Password Firewall script only uses the username to verify the username and password do not match and for local event logging purposes. The username is never sent to the Password RBL API.) The API response is relayed back to Windows (via `passwdhk.dll`). If the chosen password is listed in the Password RBL database, then Windows blocks the password change and notifies the end-user that the chosen password does not meet the network password policy complexity requirements.

Upgrade Information

In order to upgrade Password Firewall from a previous version, you have two options. The recommended method is to download the latest version and perform an “over install” using our wizard-based Easy Install method. Alternatively, if you prefer the manual installation method, simply replace the `passwdfw.ps1` file in the standard installation folder (typically, `C:\Program Files\PasswordRBL`) with the new version and also apply the latest registry changes (using the provided reg file). See the following section for detailed installation instructions.

When performing either upgrade method, the `passwdfw.ps1` file is replaced/overwritten. If you have added a Tracking ID, Blacklist ID, GroupFilter or otherwise customized this file, it will be lost as part of the upgrade. Be sure to annotate which IDs and settings you were using for this system so you can re-add them after the upgrade. As of version 3.0, all these custom settings have been moved to an external INI file which makes future upgrades easier and more streamlined.

Installation

The recommended method for installing Password Firewall is to use the wizard-based Easy Install. This method will copy the necessary files into the proper locations and create the needed registry keys. Additionally, the wizard registers the installation with Windows to make uninstallation just as easy. Alternatively, and to provide complete transparency to how the software functions, customers have the option to perform a manual installation.



For new installs, it is important to note, that no matter which method is chosen, a reboot will be required to activate the password hook DLL with the Windows Local Security Authority (LSA) subsystem.

Remember: You need to install Password Firewall on every domain controller to ensure complete protection from bad passwords!

Before Installing

Before you get started installing Password Firewall, be sure the server has recent successful backups and you've subscribed to Password RBL and have provided the public IP address(es) that will be used when domain controllers connect to the Password RBL API. This is commonly the edge firewall's WAN interface IP address assigned by the Internet Service Provider (ISP). If you do not know this IP address, you can follow this short procedure to determine the correct IP address (in most circumstances).

1. Using a web browser on the domain controller(s) where Password Firewall will be installed...
2. Browse to www.whatismyip.com
3. This website will show your public IP address on the screen.
4. Provide this IP address to Password RBL when subscribing.

If you are deploying Password Firewall to a new site, then you will need to provide this new public IP address to Password RBL so it can be authorized on your account. This may require upgrading to a larger subscription package. See www.PasswordRBL.com for current subscription package information, features and costs.

Interactive Installation

The provided wizard-based easy install is the recommended method for deploying Password Firewall throughout your organization. This wizard automatically creates the necessary registry keys and copies the needed files to the server. To perform an easy install, simply follow the below steps.

Remember: You only need to install Password Firewall on your Active Directory domain controllers – not on member servers or workstations.

1. Download the latest version of the Easy Install from the Downloads section of the Password RBL website.
 - a. We recommend you compare the file hash to verify you have the correct file.
2. Run the setup executable file
3. Click Next to begin the setup
4. Setup prompts you to provide the optional Tracking ID, Custom Blacklist ID, and GroupFilter settings. If you do not wish to use any of these settings, then simply leave them blank and click Next.



5. Setup then installs the program files and creates the necessary registry keys
6. Click the Finish button to complete the setup.
7. If this is a new installation (not an upgrade), you will be prompted to restart the server in order to activate the software.

Automated Installation

The provided wizard-based Easy Install can be used in an automated fashion by running the installation in “silent” mode and providing all desired settings as command-line parameters. This method works especially well with Group Policy based deployments of Password Firewall across an entire organization’s Domain Controllers.

When automating the installation, you must provide two command-line arguments in order to put the installer in “silent” mode. You can then provide any of the below mentioned optional arguments. If you do not specify the required “silent” parameters, then installation runs in interactive mode, requiring clicks to advance the installation.

IMPORTANT: When you run a new installation of Password Firewall in “silent” mode, the installer will trigger an immediate reboot of the domain controller. Upgrades do not require reboots (unless future documentation specifies otherwise).

Basic Syntax:

```
setup-passwordfirewall.exe [ Required Parameters ] [ Optional Parameters ]
```

Parameter Listing

Parameter	Required	Description and Format
/VERYSILENT	Yes	Instructs setup to run in silent/automated mode. The VERYSILENT parameter automates installation without any display. Format: /VERYSILENT
/SUPPRESSMSGBOXES	Yes	Suppresses and auto-answers any message box prompts during setup. Required when VERYSILENT has been used. Format: /SUPPRESSMSGBOXES
/LOG	No	Use this option to specify a logging location for the installation process. Use quotes if the file path contains spaces.



		<p>The specified path must be complete, beginning with a drive letter, and every specified folder in the path must already exist, but the file will be created if it doesn't already exist.</p> <p>Installation will fail if folder cannot be found or the log file cannot be created.</p> <p>Format: /LOG=<Full Path to log file></p>
/TrackingID	No	<p>Use to specify the Tracking ID to be used for this installation.</p> <p>Note: During automated installation, there is no validity checking of the provided value.</p> <p>Format: /TrackingID=<32 hex characters></p>
/BlacklistID	No	<p>Use to specify the custom Blacklist ID to be used for this installation.</p> <p>Note: During automated installation, there is no validity checking of the provided value.</p> <p>Format: /BlacklistID=<32 hex characters></p>
/GroupFilter	No	<p>Use to specify the Active Directory group that defines which accounts are subjected to Password Firewall scrutiny. Use quotes if the group name contains spaces.</p> <p>Note: During automated installation, there is no validity checking of the provided value.</p> <p>Format: /GroupFilter=<AD GroupName></p>
/VerboseLogging	No	<p>Use to enable additional logging information when Password Firewall runs.</p> <p>Accepted values are either "True" or "False" (default)</p> <p>Format: /VerboseLogging=<True or False></p>
/AllowOnError	No	<p>Use to control whether or not Password Firewall allows password changes when an error occurs.</p> <p>Accepted values are either "True" (default) or "False"</p> <p>Format: /AllowOnError=<True or False></p>
/ReportingOnlyMode	No	<p>Use to put Password Firewall in Reporting Only Mode so that password changes are allowed even if the password exists in the blacklist.</p>



		Accepted values are either "True" or "False" (default) Format: /ReportingOnlyMode=<True or False>
/HashType	No	Use to control which cryptographic hashing algorithm is used with Password RBL. Accepted values are either "PBKDF2" (default) or "SHA256" /Format: /HashType=<PBKDF2 or SHA256>

Examples

The following command runs setup in silent mode and enables verbose logging.

```
Setup-passwordfirewall.exe /SILENT /SUPPRESSMSGBOXES /VerboseLogging=True
```

This command runs setup without any display and enables VerboseLogging and sets a specific TrackingID to be used

```
Setup-passwordfirewall.exe /VERYSILENT /SUPPRESSMSGBOXES /VerboseLogging=True  
/TrackingID="1234567890abcdef1234567890abcdef"
```

This example runs setup without any display, enables the installation log file and limits password scrutiny only to users in the specified group.

```
Setup-passwordfirewall.exe /VERYSILENT /SUPPRESSMSGBOXES  
/Log="C:\pfinstall.log" /GroupFilter="Password Firewall Group"
```

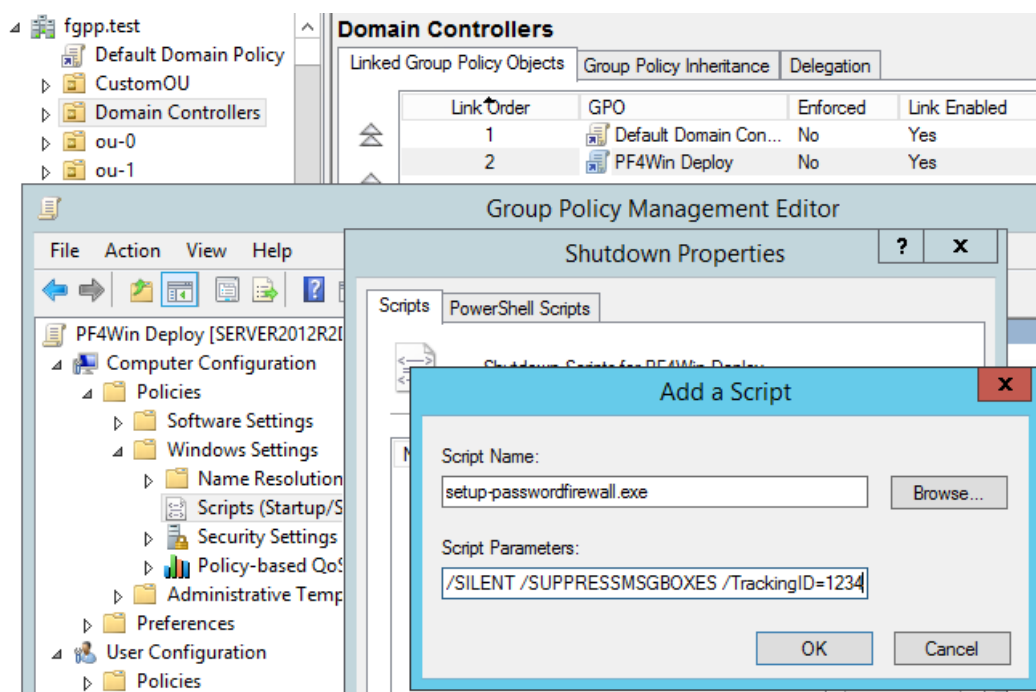
Using Group Policy

The automated installation method is compatible with Microsoft's Group Policy. Using Group Policy is a great way to deploy and configure Password Firewall throughout your organization with minimal effort. Use the below procedure as a guide when deploying with Group Policy.

1. Edit the Default Domain Controllers Group Policy Object (GPO) or create a new GPO and link it to the Organizational Unit that contains your Domain Controllers



2. Expand the Group Policy navigational tree through the following path:
 - a. Computer Configuration > Policies > Windows Settings > Scripts
3. Double-click on Startup or Shutdown depending on your desired installation time.
 - a. Password RBL recommends scheduling the installation of Password Firewall at computer shutdown since new installations will trigger an immediate restart of the domain controller to activate the software with Windows.
4. Click the Show Files button at the bottom of the window.
5. Drag the “setup-passwordfirewall.exe” Easy Install package into the shown folder.
6. Close the Explorer window
7. Click the Add button
 - a. Click browse to open the GPO's folder. Choose the “setup-passwordfirewall.exe” file that you placed in this location in the previous step
 - b. Type in the required parameters and any optional parameters to the installation program following the Parameter Listing above.
 - c. Your display should resemble the picture below:



8. Click OK until you are back to the Group Policy Object editor window.
9. Exit the Group Policy Editor which will save your changes.

NOTE: When a new server is promoted to domain controller, it commonly takes an extra reboot (after the reboot that is part of the promotion) because the new Group Policy hasn't yet applied to this server so quickly after it has been promoted.



Manual Installation

The recommended installation method is to use the Easy Install (see above) in either interactive or automated mode, but customers can instead follow the below steps to perform a completely manual installation of Password Firewall.

IMPORTANT: If a manual installation is performed, then in order to uninstall Password Firewall, the manual uninstallation method must be used as there will be no uninstallation program created during the manual installation procedure.

1. Download the latest version of the installation files from the Downloads section of the Password RBL website.
2. Copy Files
 - Copy the `passwdhk.dll` file to the System32 folder of your Windows directory.
 - Example: `C:\Windows\System32`
 - Create a folder named “PasswordRBL” in the 64-bit Program Files folder
 - Example: `C:\Program Files\PasswordRBL`
 - Notice there is no space in PasswordRBL
 - Copy the `passwdfw.ps1` file to the PasswordRBL folder that was just created.
 - Also copy the `passwdfw.ini` file to this same folder
3. Make Registry Changes
 - Run `regedit.exe`
 - Note: this must be the 64-bit version of `regedit.exe` from the System32 folder. Do not run the 32-bit version (from the SysWOW64 folder).
 - Register Password Hook DLL with LSA
 - Browse to the following registry key and append this value “passwdhk”
 - `HKLM\SYSTEM\CurrentControlSet\Control\Lsa\Notification Packages`
 - **Note:** There is no “.dll” on this value!
 - This change will not be activated until the server is rebooted.
 - Register the Password Firewall Event Log Source
 - Create the following key & value, creating any folders in the process
 - `HKLM\SYSTEM\CurrentControlSet\services\eventlog\Application\Password Firewall`
 - Type: `REG_EXPAND_SZ`
 - Name: `EventMessageFile`
 - Value: <Depends on Windows Version>
 - 2008 R2 - .NET version 2
`{win}\Microsoft.NET\Framework64\v2.0.50727\EventLogMessages.dll`
 - 2012 and later - .NET version 4
`{win}\Microsoft.NET\Framework64\v4.0.30319\EventLogMessages.dll`
 - where {win} is the path to the Windows folder on this system



- Register the Password Hook DLL settings
 - Merge the provided “.reg” file to automatically create the necessary values for the DLL. These settings have a very specific format. If you’d like to review the exact changes that will be made, simply open this file using MS Notepad or any other basic text editor program.
- 4. Update PowerShell Script Execution Policy
 - Open an Administrative 64-bit PowerShell Window (right-click and choose Run as Administrator)
 - Check existing Execution Policy by running the cmdlet “Get-ExecutionPolicy”
 - If the above command returns “Restricted” or “AllSigned” then run this command
 - Set-ExecutionPolicy RemoteSigned
- 5. Restart the server

Additional Configuration Options

Password Firewall has a few configuration options available, but it will function without any additional configuration as long as you have an active subscription and have provided your source IP address(es) to Password RBL.

The below configuration options are all defined inside the passwdfw.ini file which you will find inside the PasswordRBL folder in the standard Program Files folder. For most installations of Windows this path will be:

C:\Program Files\PasswordRBL

NOTE: As of version 3.0, there is now no reason to change the provided PS1 file. All of the configuration options are located in the INI file.

AllowOnError

This option allows you to choose what happens if an error occurs during the processing of a password change event. When set to True (the default), Password Firewall will allow the password change to occur even though it cannot connect to the Password RBL API to determine if the password choice is listed the database.

If this option is set to False, then Password Firewall will prevent the password change. Changing this option to False will lead to a more secure network since passwords will always have to be checked against the Password RBL API, but it is important to note that this would result in all password changes being denied until the error condition is cleared.



ReportingOnlyMode

Reporting Only Mode is an option that still processes all password change events using the Password Firewall software but regardless of the API response, all chosen passwords are allowed to be used. This allows IT managers to determine how often their user population is choosing passwords that are identified by Password RBL as bad passwords, while not impacting end-users' password choices. IT managers can either count the API responses (matches or misses) to get desired metrics or combine the ReportingOnlyMode with the TrackingID (below) option to have Password RBL provide reporting information.

Using a GroupFilter

This optional feature restricts password filtering to only users who exist in the provided Active Directory Group. When left blank (the default) Password Firewall scrutinizes password changes for all users regardless of group membership. The membership search is recursive, so users of nested groups will be considered members of the provided filter group. This feature is helpful when performing a phased rollout of Password Firewall across an organization or when you do not wish to subject all users to Password Firewall filtering. When entering the group in between the quotes, you should enter the `sAMAccountName` of the Group without any domain information.

This feature was added in Password Firewall version 2.1 and, if used, either requires .NET 3.5 or the ActiveDirectory module for PowerShell to be installed (both are installed on domain controllers, by default). If the neither pre-requisites are found, an error will be logged in the server's event log and the password change event will be allowed or denied depending upon the setting of AllowOnError (see above).

Using Tracking IDs

This feature allows requests sent to the Password RBL to include a customer's assigned TrackingID for use in metrics reporting. This option is null (blank) by default and optional. When left null, passwords submitted to the API are not counted. When set to a valid Tracking ID, the submissions to the API are tagged with the supplied tracking ID and customers can then use the My Metrics page on the Password RBL website to get report on how frequently password changes include a poor password choice.

Using Custom Blacklists

Password Firewall is able to use the Custom Blacklists feature of the Password RBL API. This feature allows requests sent to the Password RBL to be searched against a custom password blacklist. This option is null (blank) by default and optional. When left null, passwords submitted to the API are only checked against the main Password RBL database of blacklisted passwords. When set to a valid Blacklist ID, the submissions to the API are searched in the custom blacklist as well as the main Password RBL password blacklist.



Password RBL provides a separate PowerShell script to manage the entries in your custom blacklist. Simply browse to Downloads section of the Password RBL website to download this tool (`prbl-cblmanagement.ps1`) and documentation that covers this topic.



Un-installation

Below are the steps required for un-installation. If you utilized the Easy Install method for installation then wizard-based uninstallation is available. However, if you originally performed a manual installation then you must use the manual uninstallation method below.

IMPORTANT: No matter which uninstallation method is used, a reboot will be required to deactivate the password hook DLL from the Windows Local Security Authority (LSA) subsystem. This reboot should happen as soon as possible after the software is uninstalled because all password changes will be blocked by Windows until the reboot occurs.

Before Uninstalling

Before you uninstall Password Firewall, it is recommended that your server has had recent successful backups. This is especially true if you are performing a manual uninstallation since direct manipulation of the registry is required.

Easy Uninstall

If you originally performed an installation using the Easy Install Wizard, then uninstallation is just as easy. You can either perform an interactive uninstall or perform an automated uninstallation using the provided Windows Batch script.

Interactive Uninstall

You will find a link to run the uninstallation wizard in the Program folder of the Start Menu/Screen as well as in the Programs and Features applet in Control Panel.

1. Use either option to launch the uninstall wizard.
2. Click Next to begin the uninstallation process
3. The uninstaller will remove the PowerShell script and Program folder. Additionally, it will unregister the password hook DLL from the LSA and mark the DLL file for deletion upon next reboot.
4. Click the Finish button to complete the wizard.
5. Restart the server to complete the removal of the software



Automated Uninstallation

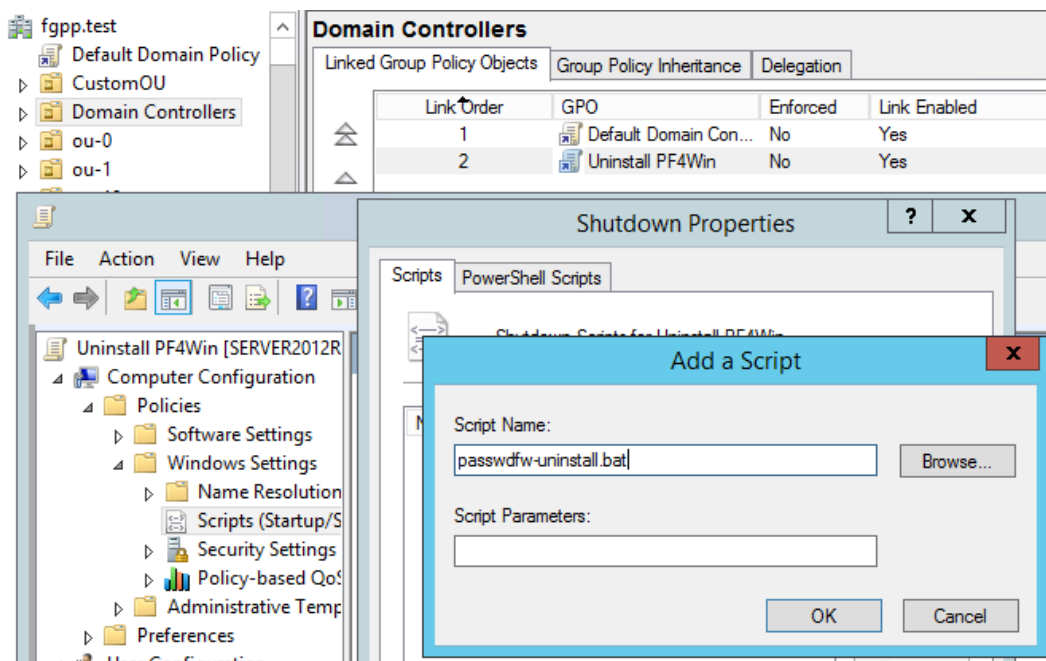
This complete download package of Password Firewall contains a Windows Batch script that can be used to uninstall Password Firewall in an automated manner. Password RBL provides the below instructions for deploying this script in a Group Policy object. Password RBL recommends using the Computer Configuration Shutdown Script functionality of the Group Policy Object since the uninstall process will immediately reboot the domain controller to complete the uninstallation process

Using Group Policy

The automated uninstall method is compatible with Microsoft's Group Policy. Using Group Policy is a great way to remove Password Firewall from all domain controllers in your organization with minimal effort. Use the below procedure as a guide when performing an automated uninstall using Group Policy.

IMPORTANT: Be sure you've removed or disabled any GPOs that run an automated installation of Password Firewall before you schedule an automated uninstallation.

1. Edit the Default Domain Controllers Group Policy Object (GPO) or create a new GPO and link it to the Organizational Unit that contains your Domain Controllers
2. Expand the Group Policy navigational tree through the following path:
 - a. Computer Configuration > Policies > Windows Settings > Scripts
3. Double-click on Startup or Shutdown** depending on your desired uninstallation time.
 - a. Password RBL recommends scheduling the uninstall of Password Firewall at computer shutdown since the uninstaller will trigger an immediate restart of the domain controller in order to deactivate the software with Windows.
4. Click the Show Files button at the bottom of the window.
5. Drag the "passwdfw-uninstall.bat" uninstaller script into the shown folder.
6. Close the Explorer window.
7. Click the Add button
 - a. Click browse to open the GPO's folder. Choose the "passwdfw-uninstall.bat" file that you placed in this location in the previous step
 - b. Your display should resemble the following picture:



8. Click OK until you are back at the GPO Editor window.
9. Exit the Group Policy Editor which will save your changes.

Manual Uninstallation

The manual uninstallation process requires manipulating the registry, which, if not done properly, could lead to significant system problems. Therefore it is always recommended to verify that you have good backups of your server(s) before following the below procedure.

1. [Required] Deactivate the Password Hook DLL
 - Run regedit.exe
 - Note: this must be the 64-bit version of regedit.exe from the System32 folder. Do not run the 32-bit version (from the SysWOW64 folder).
 - Browse to the following registry key and remove ONLY this value: `passwdhk`
 - Leave any other values that are present in this key.
 - `HKLM\SYSTEM\CurrentControlSet\Control\Lsa\Notification Packages`
 - This change will not be activated until the server is rebooted.
2. [Required] Restart the server to release the lock on the `passwdhk.dll` file
3. [Optional] Delete Files
 - Delete the `passwdhk.dll` file from the System32 folder of your Windows directory.
 - Example: `C:\Windows\System32`
 - Delete the folder named "PasswordRBL" in the 64-bit Program Files folder
 - Example: `C:\Program Files\PasswordRBL`



- Notice there is no space in PasswordRBL
- 4. [Optional] Remove Registry Changes
 - Run regedit.exe
 - Note: this must be the 64-bit version of regedit.exe from the System32 folder. Do not run the 32-bit version (from the SysWOW64 folder).
 - Delete the Password Hook DLL registry settings
 - Browse to the following registry key and delete the entire folder named “passwdhk”
 - HKLM\SYSTEM\CurrentControlSet\Control\Lsa\passwdhk
- 5. [Optional] Update PowerShell Script Execution Policy
 - Open an Administrative 64-bit PowerShell Window (right-click and choose Run as Administrator)
 - Set the PowerShell script Execution Policy to your desired level. Note the defaults are below:
 - 2008 R2 – Restricted
 - 2012 – Restricted
 - 2012 R2 – RemoteSigned
 - Example: Set-ExecutionPolicy RemoteSigned
- 6. Uninstall is complete, but you must reboot as soon as possible to deactivate the software with Windows.

Troubleshooting

Installation

If you are having trouble installing Password Firewall, first make sure you are installing on a supported Operating System that meets all the requirements listed earlier in this document. Most notably, Password Firewall is only supported on 64-bit versions of Windows Server and must be installed on every domain controller in Active Directory to ensure all password changes are being processed.

If the Easy Install wizard is not functioning or gives an error before completion, then it is recommended to perform a manual installation using the instructions in this document.



Operation

Since Password Firewall is launched on demand when Windows processes a password change and there is no running service or process it can be difficult to determine if Password Firewall is functioning properly. The best way to determine if Password Firewall is functioning is to review log messages in the Windows Application Event Log. Password Firewall log entries will have an event source name of “Password Firewall.” Each time Password Firewall runs it will generate a log entry.

Tip: Enable Verbose Logging to include the number of event messages logged to the Event Log. This aids in troubleshooting.

When Password Firewall is functioning properly, you should see various log entries that provide feedback on the status of Password Firewall. Below is an example of an information type entry that lists the username associated with the password change event, the HTTP status code, and the response from the Password RBL API (where a zero indicates the password is not listed in the database and a one indicates that it is listed).

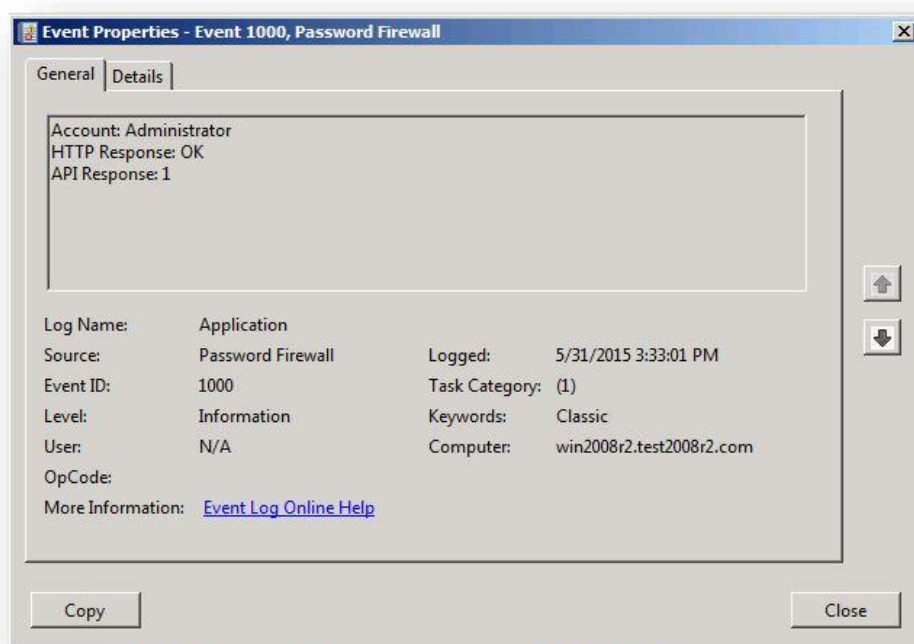


Figure 1: Example Event Log entry

Error Messages

If you are instead receiving an error, the error message should be descriptive of the problem. The most common errors are HTTP timeouts or unauthorized messages.



Timeouts are caused when the system running Password Firewall cannot connect to the Password RBL API via HTTPS. This can be due to DNS lookup errors. Make sure this system can resolve the name “api.passwordrbl.com.” Timeouts may also be caused if your organization limits outbound connections from the server(s) running Password Firewall and/or performs man-in-the-middle inspection of HTTPS traffic and these proxies are preventing a connection from the Password Firewall software to the hosted API service. Resolving these issues are outside the scope of this document. Contact Password RBL support for guidance with proxy issues.

Unauthorized messages mean that Password Firewall has successfully contacted the Password RBL API but the source IP address is not an authorized IP to utilize the API. Password RBL limits connections to IPs associated with customer accounts. In this case, you need to inform Password RBL of the public/Internet IP address for this server. This is not likely the IP address assigned to the Network Interface in Windows. The IP that is needed is the IP address from the ISP. To determine which IP address this server uses when it connects to Internet destinations, open a web browser and browse to www.whatismyip.com. Copy this IP address and paste it in the Contact Form at the Password RBL website to update your account (note: this may require upgrading your subscription depending on the number of source IPs allocated).

Slow Password Changes

If password changes are occurring, but take an extended amount of time to complete, this is typically due to the use of the GroupFilter feature and the queries to Active Directory are taking longer than expected. To determine if this is the case, enable Verbose Logging and review the time stamps of the log entries as Password Firewall runs. To make AD queries faster, it is recommended to remove any nested groups inside the Group Name provided in the GroupFilter option.

No Log Entries in Event Viewer

If no log entries are being generated in the Application Event Log, then either the server has not been restarted since the installation of Password Firewall or there was a problem with the installation process. If the server has already been restarted, then verify the installation by proceeding through the manual installation procedure listed earlier in this document.

Frequently Asked Questions

How do I know Password RBL is not just reading all my network passwords?

Because it's not possible. Passwords submitted to the Password RBL API have already been salted and cryptographically hashed 30,000 times with the industry standard PBKDF2 algorithm.



Cryptographic hash functions are one-way functions that cannot be reversed or "decrypted." This one-way property of cryptographic hashing prevents Password RBL from being able to see the clear text password that was submitted. The API looks for the existence of the hash value in the database not the actual password. Remember, Password Firewall is source-available, so you can open the `passwdfw.ps1` script and see for yourself.

Where do I install Password Firewall in my network?

Password Firewall needs to be installed on every Active Directory Domain Controller to ensure complete protection from bad passwords. Payment to utilize Password Firewall follows the Password RBL subscription model and is not licensed per installation so you are not necessarily paying more for additional installations. The installation is lightweight, quick and easy but does require the server(s) to be restarted, so plan accordingly.

Do I install Password Firewall on Read-Only Domain Controllers (RODCs)?

No. Read-Only Domain Controllers do not directly process password changes, so you only need to install Password Firewall on writeable Domain Controllers.

Do my end-users have to do anything different when changing their network password?

No. This is one of the greatest features of Password Firewall. End-users and Administrators use the normal built-in methods for updating Active Directory passwords. There is nothing new to learn and users/helpdesk employees don't need to do anything differently.

Why is Password Firewall programmed in PowerShell?

Some applications have pre-requisites that make installation and support more complex. PowerShell is already built-in to all Windows Servers and has all the functionality needed to support Password Firewall, so utilizing PowerShell keeps the Password Firewall client software lightweight and easy to deploy. Furthermore, PowerShell scripting is a humanly readable format that is easy to understand (even for non-programmers) and any legitimate security-based software solution should be able to show its source code without impacting the security of the solution.

Can I change the `passwdfw.ps1` script?

There is nothing preventing you from changing this file. If you choose to, exercise extreme caution. The `passwdfw.ps1` script is executed with SYSTEM level permissions so it is very important to follow all programming best practices so you don't expose your system to any security risks. For example, it would not be wise to log any of the usernames or passwords as this would compromise the security of your network. Be aware that re-installations and upgrades using the Password Firewall Easy Installer will overwrite any changes you've made to the `passwdfw.ps1` script. Additionally, Password RBL will not be able to support any of your changes.

How do I get a report of how many bad passwords are being blocked?

The easiest way to do this is to use the tracking IDs assigned to your Password RBL account. If you add your specific tracking ID to the `passwdfw.ini` file (see the Additional Configuration section) then you can utilize the My Metrics page at PasswordRBL.com to obtain a report and download lifetime statistics.



How does password firewall fit in with Windows Password Policy?

Password Firewall extends the built-in Windows password policy with password blacklisting. So whatever portions of the built-in Password Policies you choose to implement, Password Firewall will also apply. For maximum security, you should enable every built-in policy and use Password Firewall to block all the passwords that are bad but are not captured by the built-in policy (i.e., Password1, Monkey123, etc.).

I have followed the instructions for automated installation with Group Policy but installation is not happening. What is wrong?

Assuming that Group Policy is functioning normally and the GPO has been configured properly, then the most common reason for a failed automated install is either neglecting to upload the setup-passwordfirewall.exe file into the GPO Computer Scripts folder or you have specified the /LOG option as part of your automated installation, but the installer cannot open this file. This is likely because an intermediary folder in the provided path doesn't exist.

Additional FAQs

More FAQs are available on our website: www.PasswordRBL.com



Password Firewall Version History

Version	Notable Changes
Current Version	Moved custom configuration settings out of PS1 file and into dedicated INI Added automated/silent install and uninstall support Added option to provide some configuration settings during interactive install Updated basic password policy to include passwords that contain username
2.30	Added new .NET-based Active Directory query function with fallback to previous PowerShell-based method
2.20	Consolidated logging function; unique Event IDs for each log message. Added dedicated exit function; move secure erasure of variables here. Prefer .NET v4 calls for event logging to remove warnings in log messages Adjust timeout values
2.10	Added GroupFilter feature
2.00	Added compatibility with new Custom Blacklist feature
1.10	Added compatibility and changed default hashing to PBKDF2
1.03	Maintenance release; enhancements, bug fixes
1.00	Original Release



Password Firewall is copyright (2017) of Password RBL, LLC, a California company, and accompanying original code is provided in a “source available” manner. Source code is available for Password Firewall components installed on customer systems, but this software is provided by and property of Password RBL. It is not Free Open Source Software. Source code is available for customers to analyze in order to guarantee that it meets their organization’s security policies. This software is not to be distributed, resold or supplied to third parties or utilized for purposes unintended by the author. If the software is augmented or changed, it is not to be considered a new product and therefore does not grant any additional license or privilege. Password RBL provides no guarantee and assumes no liability from your use or misuse of the provided software.

Some products mentioned in this document are copyrighted by companies other than Password RBL. Most notably are, but not limited to, Microsoft Windows and Active Directory, which are both copyright of the Microsoft Corporation. The password hook component of Password Firewall is work that is a part of the AcctSync project and licensed under the Lesser GNU Public License (LGPL) v2.0. Source code for this component is also available for review and can be obtained at <http://passwdhk.sourceforge.net>.